

Find the Lighting Solution
Specific for your Facility!

AEONTM
PRO SERIES
Sports Lighting



Designed, Engineered &



Assembled in the USA

LIGHT UP YOUR WORLD

What makes the AEON LED Sports Light
your Lighting Solution of Choice?



The Ultimate Sports Light for Versatility. The Unmatched Player, Fan and Broadcast Experience allows both Venue Spectators and Viewers at Home new ways to View and Experience the Emotion, Excitement and Atmosphere of the Sport. Our luminaires are durable, long-lasting, and weather resistant, making them ideal for both indoor and outdoor use. Whether you are lighting a small or large facility, you'll find it with AEON LED.

AEON Model	Watts	Delivered Lumens	HID Equivalent	Energy Savings*	Current Draw (mA)						Net Weight	EPA (Sq. Ft.)
					120V	208V	240V	277V	347V	480V		
HL-AS-750WD	750W	126,500	3000W	75%	6579	3796	3289	3008	2402	1736	53 lbs. (24 Kg.)	2.5
HL-AS-1200WD	1200W	185,700	4000W	70%	-	6073	5263	4813	3842	2778	57 lbs. (26 Kg.)	2.85

Construction:

- Heavy-duty, Lightweight and Durable Die-Cast Design for High Wear Resistance: Withstands Harsh, Extreme Outdoor Conditions and Corrosive Environments
- The most Powerful Sports Luminaire with the Highest Reliability Level: Incredibly High 95% Total Efficiency and with the Highest Efficacy in its own Class: 170+ Delivered LpW. More Light with Fewer Luminaires.
- Proprietary Thermal Management Design with Passive Cooling Maximizes Heat Dissipation for a Longer Life of the Luminaire. Designed for Greater Life Expectancy in Warmer Climates
- Patented Revolutionary Aerodynamic Design for Minimal Wind Resistance
- State-of-the-Art, Aesthetically Pleasant Compact Design with No Exposed Electronics or Wiring
- Patented Cross-Vent Convection Design for Longer Life of the LED Package and Electronic Components
- Rugged, Weather-Tight Design, IP67 (NEMA: 6P) Rated for Wet location
- Adjustable in 7.5° Increments: 0-90° Orient and 270° Tilt Angle
- Solid-State Design: No Moving Parts. Ideal for High Vibration Areas (ANSI C136.31, 3G Rated)
- Simple entry allows for Easy Installation and Maintenance
- Several Mounting Options: Including Yoke, Pendent, or Hook
- Rugged and Durable Luminaire stands up to the most demanding Elements and is ideal for use in Hot & Humid Climates and Suitable for use in Corrosive Environments
- Neutral Color reflects all Wavelengths of External Light and therefore absorbs the least Heat for Better Thermal Management. UV Stabilized Electrostatic Finish to withstand Extreme Outdoor Conditions
- Corrosion Resistant Stainless Steel Hardware
- Incredibly Long-Life Span of over 100,000 hours
- AEON Drivers Specifically Engineered and Designed for AEON Luminaires



1,200W AEON LED Luminaire



Designed, Engineered &
Assembled in the USA



U.S. Patents:

D866,832, D866,833
D866,834, D866,835

HyLite is providing this information to the general public only. Please note that all products contained herein are either Trademarked, Copyrighted, have Patents and/or Patents Pending. Any use of these Designs is Strictly Prohibited. HyLite LED, LLC. Protects its Proprietary Information Vigorously in the Courts of the United States of America.

AEON Drivers Specifically Engineered and Designed
For AEON Luminaires! 170+ Delivered LpW!



With Enhanced Glare-Free Illumination and various Beam Spreads, AEON™ Minimizes Shadows and Provides a Crisp Illumination of the Playing Surface, Heightening the Drama of each Play and avoiding any Uncomfortable Sensation or Visual Discomfort for the Athletes, the Players or the Spectators. AEON's Proprietary Optics produce the Ideal Distribution and Beam Angles for Sports Lighting, all while saving you up to 75% in Energy use compared to Traditional Sports Lighting.

Engineered with State-of-the-Art Technology for Efficiency, Glare Control and Uniformity, the AEON™ Luminaires are ideal for HDTV Broadcasting, Digital Photography and Flicker-free Slow-Motion Recording for Optimal Television and Live Audience Viewing. AEON™ features High Energy Efficiency, Instant On/Off, Dimming, Full Controllability and Complete Flexibility while providing Seamless Flicker-Free Lighting.



Our Technology is in a League of its Own!
...Innovation that will enable
New Experiences at Sports Venues!

Precision, Glare-Free Optics:

- Proprietary Glare-Free Illumination: No Uncomfortable Sensation or Visual Discomfort for the Players, Spectators or the Broadcast. UGR <19
- Precise, Custom-Engineered Optics with Controlled Intensity and Uniformity: Excellent for HDTV Broadcasting, Slow-Motion Flicker-free Recording and Digital Photography. Maintains Delivered Foot Candles over Luminaire's Life
- High Color Rendition showing True Colors: CRI >85+
- Scalable LED Modules in NEMA 2, 3, 4, 5 and 6 Beam Spreads allows for Optimized Configuration for different Sports and Class of Play
- Various Delivered Lumen Packages to suit a Variety of Indoor and Outdoor Sports
- Proprietary Design offers Uniform and Constant Light Levels throughout the Life of the Luminaire, with Minimal Lumen Depreciation
- Avoids Light Pollution and Trespass: Optical Accuracy Directs Light precisely where needed without Spill
- Neighborhood-Friendly: No Spillage or Sky Glow



Crisp & Clear Illumination



Enjoy a Drastic Reduction in your Monthly Utility Bill
and Eliminate Costly Maintenance Expenses.
AEON...a Favorable Impact on your Bottom-Line.

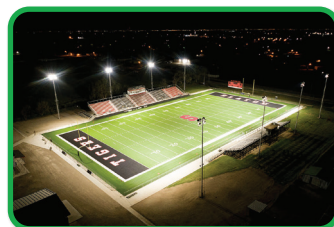
Electronics:

- Advance Technology for Luminaire Longevity: Integrated Power Supply Operates at a Lower Temperature and at an incredible 95% Efficiency.
- Technology within the Luminaire: Fully Encased, No External Exposure to any Sensitive Electronic Components
- User Friendly Features: Lenses, Modules and Drivers are Field-Changeable. Saves Time, Labor and Money....no need to replace the entire Luminaire!
- 6kV (Line-Line) and 10kA / 20kV (Line-Ground) Surge Protection against Over Voltage, Short Circuiting, and Over Temperature.
- Multi-Voltage: Available in 120-277VAC and 347-480VAC
- Suitable for Wide Ambient Temperatures: -40°F to +131°F (-40°C to +55°C)
- Operational Flexibility: Adaptable to Various Intelligent Lighting Controls: Wired or Wireless, Wi-Fi, Bluetooth, Zigbee, Dali, AirMesh Networks, Hybrid Networked Lighting Control, etc.
- Ultra-Low EMI (THD <20) eliminates Electrical Interference with surrounding sensitive Electronic Systems.

Functionality:

- Standard Included: Instant On/Off, Continuous Dimming, Prewired Sheathed Cord, Hoist Hook and 3.3 ft (1m) Stainless Steel Safety Cable
- Simple, Reliable and Affordable, Maintenance-free Design. Can be Operated with or without Glare Shield
- Save Labor Cost Significantly: Quick and Easy Installation Process
- Meets/Exceeds National and International Standards

Multi-Voltage Options
120-277VAC / 347-480VAC



Outstanding Features:

- Patented Cross-Vent Convection Design: Extracts Heat from the Light Source, enabling the Light Engine to run Cool, thereby extending Components Life and ultimately Prolonging the Life of the Luminaire.
- High Color Rendition showing True Colors: CRI >85+
- Instant On/Off
- Proprietary Glare-Free Illumination: UGR <19
- Designed for 4K and HD Broadcasting.
- Neighborhood-Friendly: No Spillage or Sky Glow
- Advanced Functionality and User Friendly with Quick Connect System
- Variable Dimming Control: 0-10VDC
- IP67 Rated for Wet location (Complete Protection)
- Rugged and Durable Luminaire: Ideal for use in Hot and Humid Climate and Suitable for use in Corrosive Environments
- Fully Encased Luminaire: No External Exposure to any Sensitive Electronic Components



2 Popular Delivered Lumen Packages

AEON Model	Watts	Delivered Lumens	HID Equivalent	Energy Savings
HL-AS-750WD	750W	126,500	3000W	75%
HL-AS-1200WD	1200W	185,700	4000W	70%

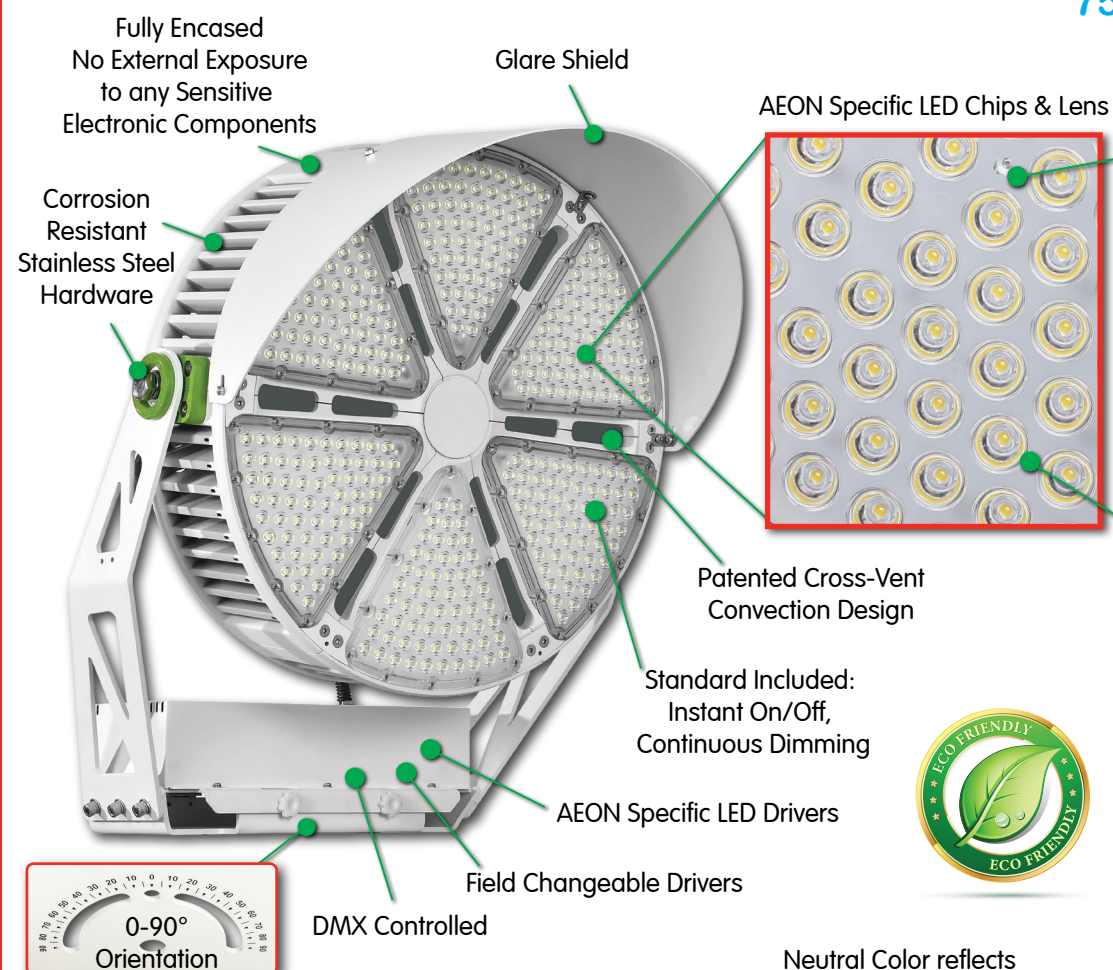
Additional Options Available for all Models:

- Wireless Controls
- Pole Capabilities
- Remote Driver Capabilities
- FREE Lighting Layouts
- Extended Warranty
- Project Financing



Enhance your Luminaire for a Lifetime with
Field Changeable Lenses, LED Modules and Drivers.
AEONTM offers Worry-free, Multi-Option Performance
for Years into the Future.

Available in:
750W & 1,200W



Available
NEMA 2, 3, 4, 5 & 6
Beam Spreads

Glare-Free
Lens Module
UGR<19

High Color Rendition
CRI >85+

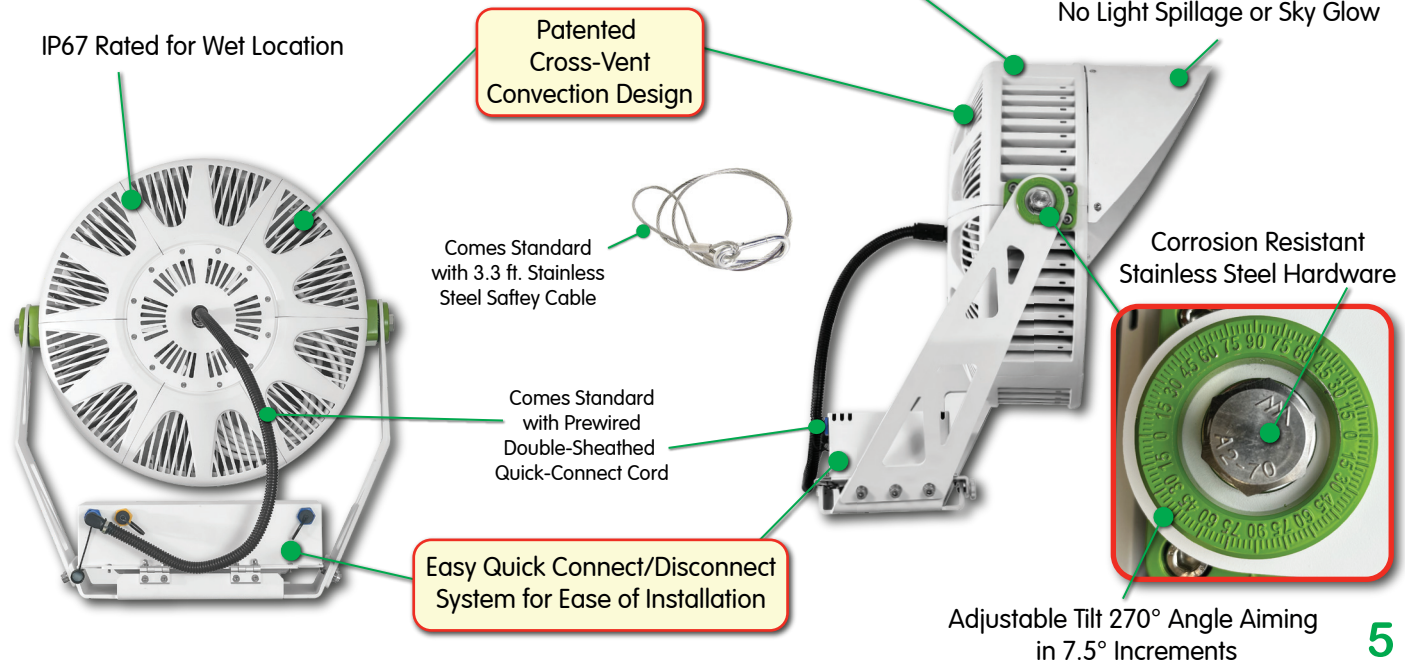
170+ Delivered LpW

Incredibly Long-Life Span
of over 100,000 hours

Designed for 4K / HDTV
Broadcasting



SAVE UP TO
75%
ON YOUR
ENERGY COSTS





SAVE UP TO
75%
ON YOUR
ENERGY COSTS

HL-AS-750WD

Watts: 750W
Delivered Lumens: 126,500
HID Equivalent: 3000W
Energy Savings*: 75%
Weight: 53 lbs.
EPA (Sq. Ft.): 2.5

** Does not include Ballast Loss, Maintenance, Replacement Lamp Savings and Disposal Costs which amount to an additional Savings of 30~50%!*



Saving
149,400
kWh
of Energy

or

Offsetting
182,567 lbs.
(82,811 kg)
of CO₂

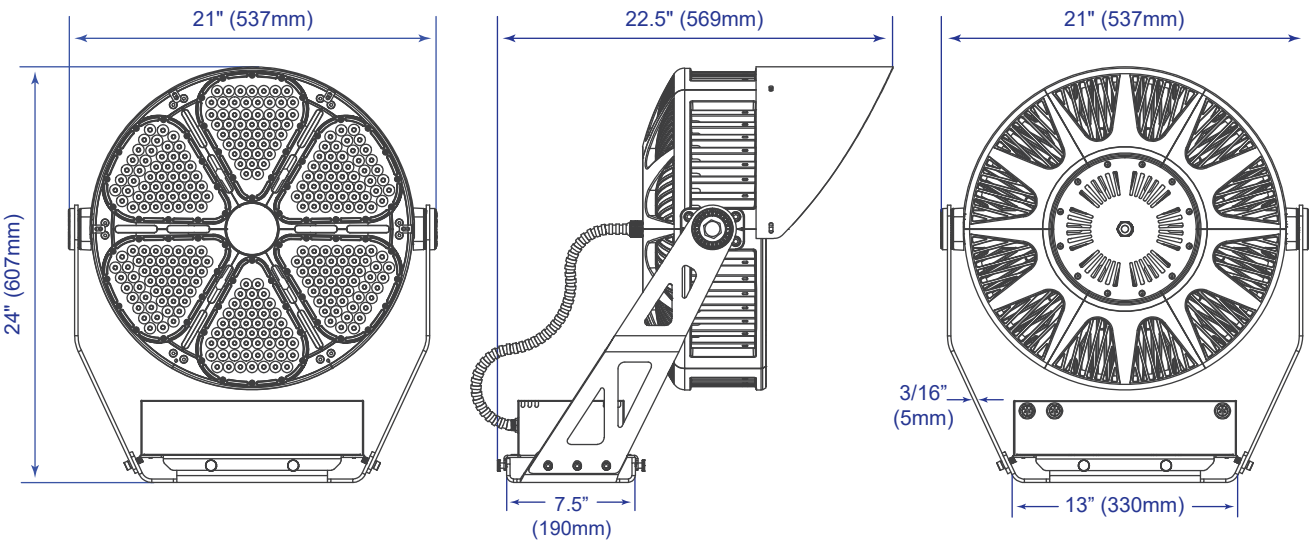


which is equivalent to either:



Planting
456
Trees

Eliminating
Driving
165,970 Miles
(267,102 km)



Ordering Nomenclature:

HL	AS	750WD	5000K	N4	277V	WH	PCK-7
COMPANY	SERIES	WATTS	CCT	NEMA SPREAD	VOLTAGE	COLOR	OPTIONS

40K = 4000K
50K = 5000K
57K = 5700K

2
3
4
5
6

277V = 120V-277V
480V = 347V-480V

WH = White
BZ = Bronze
GY = Gray
BK = Black

Important Note:

Standard Color: Signal White. Other Colors available as "Special Orders" only and with Longer Lead Times

Options:

PCK-7 Photo Control Receptacle Kit Only (Photocell not included)



SAVE UP TO
70%
ON YOUR
ENERGY COSTS

HL-AS-1200WD

Watts: 1200W
Delivered Lumens: 185,700
HID Equivalent: 4000W
Energy Savings*: 70%
Weight: 57 lbs.
EPA (Sq. Ft.): 2.85

** Does not include Ballast Loss, Maintenance, Replacement Lamp Savings and Disposal Costs which amount to an additional Savings of 30~50%!*



Saving
187,200
kWh
of Energy

or

Offsetting
228,758 lbs.
(103,762 kg)
of CO₂

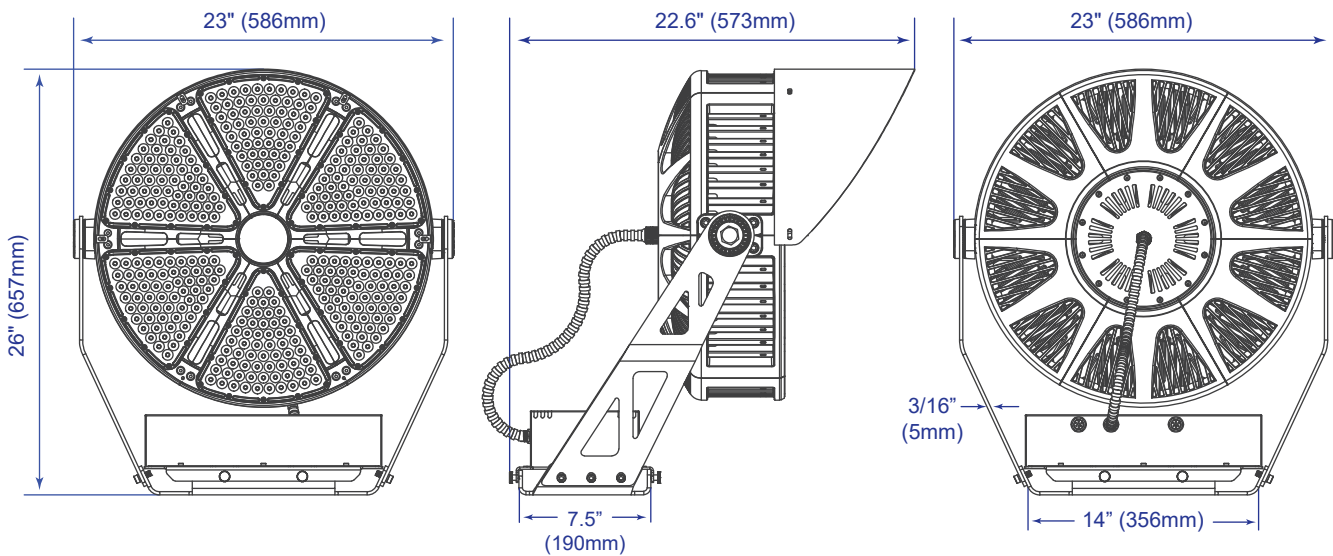


which is equivalent to either:



Planting
572
Trees

Eliminating
Driving
207,962 Miles
(334,682 km)



Ordering Nomenclature:

HL	AS	1200WD	5000K	N4	480V	WH	PCK-7
COMPANY	SERIES	WATTS	CCT	NEMA SPREAD	VOLTAGE	COLOR	OPTIONS

40K = 4000K
50K = 5000K
57K = 5700K

2
3
4
5
6

277V = 208V-277V
480V = 347V-480V

WH = White
BZ = Bronze
GY = Gray
BK = Black

Important Note:

Standard Color: Signal White. Other Colors available as "Special Orders" only and with Longer Lead Times

Options:

PCK-7 Photo Control Receptacle Kit Only (Photocell not included)

Standard CCT: 5000K
Other CCT'S available as "Special Order" only and with Longer Lead Times

AEONTM PRO SERIES High-Mast Lighting

The Most Efficient, Versatile and the Most Powerful
LED High-Mast Luminaires in the Industry!

AEON's High-Mast Lighting is ideal for Roadways, Sea Ports, Airports, Parking Lots & More! With Enhanced Glare-Free Illumination and various popular Beam Spreads, AEON Provides Crisp Illumination, avoiding any Visual Discomfort. AEON's Proprietary Optics produce the Ideal Light Distribution and Beam Spreads for a Variety of Lighting applications, while saving you up to 75% in Energy use compared to Traditional Lighting.

Engineered with State-of-the Art technology for Efficiency, Glare Control, and Uniformity, the Indirect Lighting features Instant On/Off, Dimming, Full Controllability, High Energy Efficiency, Flicker-Free Lighting and Complete Flexibility.

The AEON delivers Simple, Smart and Easy-to-Use High-Mast Lighting Solutions that provide Advanced Functionality, Versatility and Operational Efficiency. Comes in our three series, PRO Series, PNR Series & ECO Series.



Available in:
ECO SERIES
PNR SERIES
PRO SERIES



AEONTM Indirect Luminaires

Illuminating the Architecture, Not Just the Room.
The Hidden Brilliance: the Art of Concealed Light.



Consistent Light Levels



Suits Multiple Applications



Domed Sports Facilities

Designed for versatile applications, including natatoriums, domes, tennis facilities, and more! Available with multiple mounting options, such as pendant and loop, to meet your specific lighting needs.

AEON's Proprietary Optics produce the Ideal Light Distribution and Beam Spreads for a Variety of Indirect Lighting applications, while saving you up to 75% in Energy use compared to Traditional Lighting. Engineered with State-of-the Art technology for Efficiency, Glare Control, and Uniformity, the Indirect Lighting features Instant On/Off, Dimming, Full Controllability, High Energy Efficiency, Flicker-Free Lighting and Complete Flexibility.

Enjoy reduced energy bills and minimal maintenance with our durable, eco-friendly designs. Drastically enhance your indoor facility with professional-grade lighting that meets the highest standards.

Pendent & Loop
Mounting
Options



AEONTM RGBA / RGBW

Available in:
310W & 500W



Proprietary
& Patented
Designs!



IP67
Glare-Free
UGR <19



NEW
NEMA 1
Beam
Spread

Create Dynamic Lighting Scenes that Bring Excitement
to your Venue! The Possibilities are Endless!

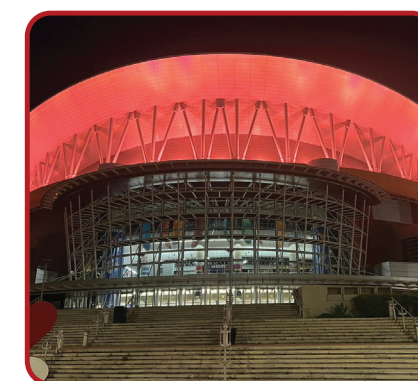
The AEON LED RGBA/RGBW Luminaire delivers Simple, Smart and Easy-to-use Full-Spectrum Color Flood Lighting Solutions that provide Advanced Functionality, Versatility and Operational Efficiency.

The possibilities are endless. Designed for both Indoor & Outdoor use, the AEON LED RGBA/RGBW Luminaire is suitable for Facade, Architectural and Sports Lighting applications.

AEON's Proprietary Optics produce the Ideal Light Distribution for Variety of Full-Spectrum Color Lighting Applications, while saving you up to 75% in Energy use compared to Traditional Lighting.

With impressive total Lumen Output of up to 19,000 Lumens, Enhanced Glare-Free Illumination, the AEON LED RGBA/RGBW Luminaire Provides Crisp Illumination, avoiding any Visual Discomfort.

Engineered with State-of-the-Art technology for Efficiency, Glare Control, and Uniformity, the AEON LED RGBA/RGBW Luminaire features Instant On/Off, Variable Dimming, Full Controllability - Wired or Wireless, Flicker-Free Lighting, High Energy Efficiency, and Complete Flexibility



Full-Spectrum RGBA/RGBW Color Luminaires

- Total Lumen Output of up to 19,000 Lumens
- Full-Spectrum Color Luminaire with the Highest Reliability Level
- Adaptable to Various Intelligent Lighting Controls - Wired or Wireless
- IP67 Rated for Wet Location
- High Color Rendition showing True Colors: CRI >85 (Amber/White)
- LED Modules in NEMA 1, NEMA 4 and NEMA 6 Beam Spreads
- Proprietary Glare-Free Illumination: No Visual Discomfort. UGR <19
- Available with Optional Tempered Glass Lens for additional Safety and UV Protection

AEON Model	Watts	Full Spectrum Delivered Lumens	Surge Protection	Maximum Input Line Current (mA)				Net Weight	EPA (Sq. Ft.)
				120V	208V	240V	277V		
HL-AEF-310W-RGBA HL-AEF-310W-RGBW	310W	Red - 3,750 lm Green - 5,655 lm Blue - 1,015 lm White - 8,465 lm	6kV Line-Line	2719	1569	1360	1243	31 lbs. (14 Kg.)	1.3
HL-AEF-500W-RGBA HL-AEF-500W-RGBW	500W	Red - 5,633 lm Green - 11,314 lm Blue - 1,573 lm White - 9,714 lm	10kA / 20kV Inline	4386	2530	2193	2006		

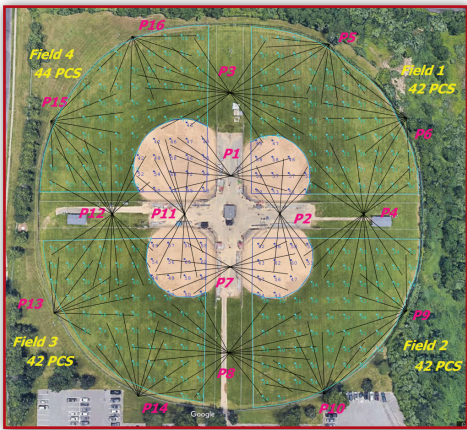
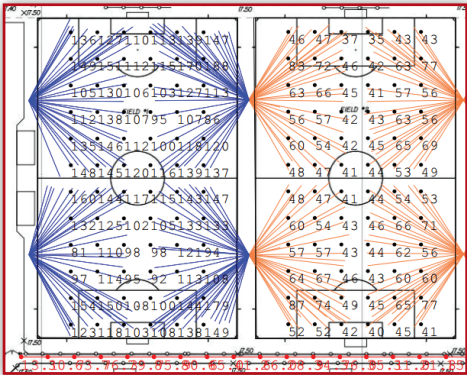
Design Your Space with Free Professional Lighting Layouts & Photometric Studies

View how AEON LED Luminaires will illuminate your facilities and applications. You will be able to see on paper what the light levels will be across the field or area that will be illuminated by AEON Luminaires. With AEON LED there are multiple Lumen packages and you can see which AEON Luminaire works best for you and your Facility.

Designed around IESNA Standards, you can be rest assured knowing that AEON will provide you with Recognized Industry Benchmarks of what your specific application requires in terms of Foot Candle Levels and Uniformity Ratios. Increased light levels increase safety for workers and or players and spectators. Know exactly what you are getting with AEON LED and with our precision Glare-Free optics that has no Spillage or Sky Glow that makes AEON LED Neighborhood friendly.

Build a State-of-the-Art Lighting System from the Ground-Up or Bring a Current Facility into the Future!

Contact Us for a Free Lighting Layout Today!



AEON has additional Capabilities and Services beyond offering the Luminaire! Below, you will see the added value you could receive by choosing AEON:

AEON LED Sports Luminaires are Designed, Engineered & Assembled in the USA. They offer the most Powerful, Rugged & Efficient Lighting options in the Industry. You can build a State-of-the-Art Lighting System from the Ground-Up or bring your Current Lighting System into the future. AEON's Patented Design has a Glare-Free Illumination of UGR <19 and eliminates visual discomfort of traditional lighting. AEON LED Sports Luminaires are Neighborhood-Friendly with Zero Spillage or Sky Glow.

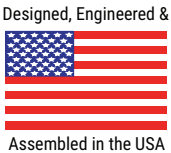
Command the World's Best Illumination with HyLink Wireless Controls:

Automating, Customizing and Controlling the Behavior of Lights Lowers Operating Costs and Provides Even Greater Energy Savings! Control the lights from your Laptop, Tablet, or Smartphone with an Encrypted, Self-Forming, Self-Healing, SNAP Mesh Network.



Build the Complete Package with Pole Capabilities:

AEON has Turnkey Solutions for the Complete Lighting Package with a variety of Poles, Cross-Arms & Platforms. If you are considering new construction or even just upgrading old existing lighting, AEON can provide you with a fully Customized Lighting Solution for your application.



AEON™ Featured Projects

Wightman Stadium



At William Paterson University, they were looking for a Sustainable & Efficient Lighting Solution for their football stadium. Being able to use the existing light poles that helped reduce cost of the overall project. A photometric study was done to see what would be the ideal solution to fit William Paterson University Football Stadium. A one-for-one fixture replacement was designed with 52 AEON's 750W Luminaires that utilized the multiple NEMA 2, 3, 4, 5 and 6 beam spread that allows for optimized configuration of the football field.

Our Proprietary Luminaires offers Uniform and Constant Light Levels throughout the Life of the Luminaire, with Minimal Lumen Depreciation.



Scan for More Information about this Project.



Fant-Ewing Coliseum



The University of Louisiana-Monroe replaced the traditional 104 PCS x 400W MH Fixtures with 54 PCS x 230W AEON LED Luminaires that significantly reduced energy and maintenance costs and enhanced the quality of illumination for broadcasting games.

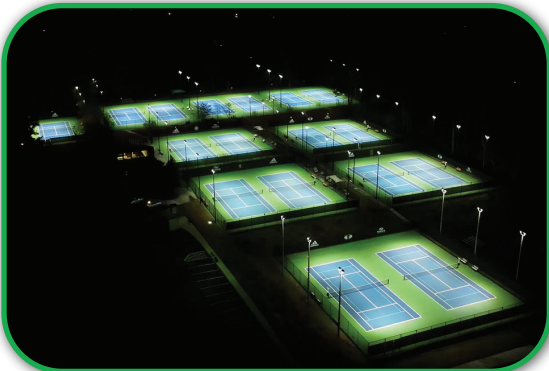
"I didn't really know what to expect when our new AEON LED lights were being installed in our coliseum. Once completed and the lights were turned on I was shocked at how bright and impressive the inside now looked. Our pictures taken have improved dramatically, broadcasting of TV games will be so much better and I haven't had one player complain about the lighting like they used to. Definitely needed and very happy with AEON LED lights." Keith Richard ULM Men's Head Basketball Coach



Scan for More Information about this Project.



Blackburn Park - Tennis Center



With the traditional Metal Halide Fixtures, it takes time for the Lights to warm-up and turn-on. To replace the 108 pcs. x 1,000W Metal Halide Fixtures, a photometric study was done to see what AEON Luminaires would be the best fit to provide uniform illumination of the Tennis Courts. A one for one replacement was selected for the project and replaced with 108 pcs. x 230W AEON Luminaires. With AEON LED, the luminaires turn on instantaneously, ready for players to hit the court immediately.

Blackburn Park included the HyLink Wireless Lighting Control System to better control Energy Savings and Lowering Operational Costs. They can turn the LED lights on from anywhere, on their Laptop, Tablet, or Smartphone.



Scan for More Information about this Project.



More AEON LED Projects



AEON™ PRO SERIES

The Perfect Sports Lighting Solution

Designed for Professional Indoor and Outdoor Sports Venues and Outdoor Stadium Lighting, AEON™ Luminaires deliver Simple, Smart and Easy-to-use Sports Lighting Solutions that provide Advanced Functionality, Versatility and Operational Efficiency.



NEXGEN
PRODUCTS

SAVE UP TO
75%
ON YOUR
ENERGY COSTS



98%
RECYCLABLE



NO

LEAD, MERCURY, TOXIC GASES
OR HEAVY METALS



AEON LED Sports Light

...Better for your Eyes, Better for the Planet.

U.S. Patents:

D866,832, D866,833

D866,834, D866,835

HyLite is providing this information to the general public only. Please note that all products contained herein are either Trademarked, Copyrighted, have Patents and/or Patents Pending. Any use of these Designs is Strictly Prohibited. HyLite LED, LLC. Protects its Proprietary Information Vigorously in the Courts of the United States of America.

As part of the Company's Continuous Product Improvement Program, HyLite LED, LLC. reserves the right to change materials or modify the design of its product without notification. All Specifications Subject to Change without notice. All values are Design and/or Typical Values when measured under laboratory conditions. Actual Values depend upon the Ambient Temperature of the Installation Location. Please consult Factory for your Specific Requirements.

All Statements, Technical Information, and Recommendations contained herein are based on Information and Tests that HyLite believes to be Reliable. The Accuracy or Completeness thereof is not Guaranteed. In accordance with HyLite "Terms and Conditions of Sale" and since Conditions of use are Outside our Control, the Purchaser should determine the Suitability of the Product for his or her Intended Use and assumes all Risk and Liability whatsoever in Connection therewith.

© 2025 HyLite LED, LLC., USA. All Rights Reserved. Aeon and the Products described in it are Copyrighted by HyLite LED, LLC., USA, with All Rights Reserved. This Catalog may not be Copied in Whole or Part, without the Express Written Consent of HyLite LED, LLC., USA.